



## President's Patch

By President Deb Blaylock

Summer is such a busy time in Alaska! We've all been anxiously waiting for it to start and then suddenly it's here! Oh wait – Mother Nature says hold on a minute – I'm going to tease you all a bit more. Our dining rooms, kitchens, spare bedrooms, and laundry rooms are all bursting with plants needing to be hardened off and readied for planting in gardens and greenhouses. There's a reason most master gardeners sagely advise not to plant until Memorial Day Weekend. Odds are ever decreasing for a late killing frost the closer we get to the end of May. Have patience and you will reap the rewards of a bountiful garden. But for those of you who couldn't wait, we will have plenty of starts for you at our annual plant sale on Saturday, June 5<sup>th</sup>, 9 am to 3 pm, Palmer Pavilion.

A big thank you to all who joined us at our first in-person meeting since March 2020. It was so great to see so many familiar faces! Joey from the CES office gave a highly informative presentation on insects and I think we all learned a thing or two. Many thanks to him.

Hopefully, we will see all of you at our summer garden tour and the pop-up tours our garden tour planning committee is coordinating. Stay tuned to your email for alerts and details! We have many projects coming up as well. Be sure and donate an hour or two of your time to help with one of our planting projects – dates and times are within this newsletter. Thank you to all our members!

### INSIDE THIS ISSUE

President's Patch	1
Next Meeting	1
Volunteers Needed	1
Peasant's Perspective	2
Cutworms	3
Minutes from May 2021	4
Palmer Midsummer Garden & Art Faire Info	5
Alaska State Fair Volunteer Information	5
Summer Weeding Schedule	6
Garden Links	7
Contacts	8
Calendar of Events	8

### GENERAL MEETINGS

FIRST MONDAY OF THE MONTH

NEXT GENERAL MEETING

MONDAY, JUNE 14TH, 2021, 7 P.M.

LOCATION:

PALMER PUBLIC LIBRARY, 655 S. VALLEY WAY,  
PALMER

PLEASE BRING A BUCKET, GARDEN TOOLS AND DRESS FOR THE WEATHER. BUSINESS MEETING AFTER THE PLANTING PROJECT IS COMPLETED.

PROJECT:

CLEAN-UP AND PLANTING AT THE PALMER PUBLIC LIBRARY FLOWER BED. BRING A FEW EXTRA PLANTS YOU WOULD LIKE TO DONATE.

### PALMER VETERANS AND PIONEERS HOME PLANTING PROJECT PHASE TWO

Volunteers needed for an additional planting at the Alaska Veterans & Pioneers Home. This is in addition to our usual planting in the front of the building which will be June at 7th at 2 pm. Tentative date is Wednesday, June 9th at 1pm. Most of the planting will be in pots located in resident courtyards and needs to be done during the weekday. We would like to request donations of extra flowers anyone can spare for this as well as members to do the planting. Please contact Sue Glenn at 907-671-0252 for more info and to volunteer.

## PEASANT'S PERSPECTIVE: BY CURT MUELLER, MASTER GARDENER

PHOTOS BY THE AUTHOR

We have certainly been fortunate after winter finally lost its grip that we've had day after day of sunshine and frost-free nights. Perhaps we will escape a late frost or even a late snow such as has happened on past occasions. We shall garden on.

The peasant has commented before on getting a head start on some garden plants, so he hopes you don't mind this being reiterated. Pre-sprouting peas and beans works very well, speeding the harvest by a few days and allowing the desired plants a jumpstart over weeds. It's a simple process. Moisten a kitchen towel and place it in a gardening flat. Place the seeds on the towel and separate varieties with a dowel or similar, with a tag identifying varieties. Place another moist towel over the seeds and put the flat in a warm place but not in direct sunlight. You'll want to keep the seeds moist as they germinate. If the top towel dries out re-moisten it. When in two or three days the seeds develop a radicle [primary root] the seeds will need to be planted. You will find that some seeds germinate faster than others and that some do not germinate at all. Keep planting as they form sprouts. If the sprouted seeds are left in the tray too long the radicle will burrow into the towel and make it exceedingly difficult to extricate. Beside speeding growth in soil, which is invariably cold in spring, there will be no skips in the planted row caused by seeds which don't germinate.

The peasant does something similar with seed potatoes. On receipt of the seed potatoes from the grower, the peasant puts them in a warm place to speed development of the eyes. The growers of seed potatoes store them at a low temperature over winter. Consequently, the spuds may not have developed protruding eyes and will benefit from warmth. After cutting the potatoes the seed pieces are placed on a layer of soil medium in a planting tray. They are then covered with a layer of medium and the medium is moistened. After two or three days the seed pieces will begin to form a rosette of roots, at which time they will need to be planted. The peasant prefers to use a medium other than soil to sprout the seed pieces. Soil can cause rot if it is too moist, whereas peat moss or coco-fiber is fairly sterile. The stage of development of the eyes in the cut pieces will determine how soon roots develop.



**This seed piece is ready to plant and ready to grow.**

Our perennial flower bed has a lovely pasque flower which blooms faithfully every spring and provides many seeds which can be collected to produce new plants or left to fall to the soil where one or two may form a new plant. The seed resembles that of a dandelion, being suspended below a tiny parachute. Unlike dandelions they don't float to any great distance but fall close to the parent plant. Our flower bed is backed by some huge rocks placed there by the labor of the peasant. Lo! A pasque flower seed found its way into a crack between two rocks and decided to take up residence there. It grew for two years before it made a flower and this year it has two flowers. It seems it is there to stay, wedged between the rocks and exposed to the slings and arrows of weather and climate.



**Each year this pasque flower shows more growth and flowers. It is about two feet above the soil in the flower bed and several feet from the parent plant. It is miraculous that it got started and thrives where it is.**

Thanks, folks. Enjoy a bountiful gardening season.

## CUTWORMS

BY JOEY JOZEF (JOEY) SLOWIK, IPM TECHNICIAN, UAF COOPERATIVE EXTENSION SERVICE

Would you believe it's cutworm season? Well, it is whether we like it or not. Cutworms are the larvae of *Noctuidae* moths. The moths are pretty plain moths, actually a very stereotypical moth, plain grey or brown coloration, with some faint bars, about 1/2-3/4 inch long. There are several species occurring in the state and really any one can be a bother if they end up in your garden. Depending on the species they may overwinter as an egg, a larva, or a pupa. They hatch, mature, or get active once the ground warms up enough.

Cutworms are most often observed in the early summer, when there are young green shoots to feed on. They can be identified by how they act when you disturb them, they curl up into as close to a ball as a caterpillar can. Other larvae will curl, but these are really the only caterpillars which do so. The caterpillars feed in a circular pattern going around the new shoot, cutting it off near the surface, thus the name cutworm. This is most disappointing when you have just transplanted something outside only to find it cut off the next day. Eventually, they migrate into the soil and feed more often on roots and plant matter out of sight. The caterpillar usually matures sometime in August.

Prevention really is the key. If you're transplanting into a new bed, sift it a bit and look for larvae. If you're really concerned, or have seen them before in a bed, collars of cardboard or aluminum foil work. The adults will be looking for fresh beds to lay eggs in so keeping a

clean bed also helps. I have a new bed at the Experiment Farm's community garden and besides root maggot pupa I also found cutworms about an inch long waiting for something new to be planted in the bed. If there isn't a bunch of plant matter, they are less interested, but my new bed was left with last year's vegetation.



photo from: <https://wiki.bugwood.org/>

The caterpillars are most active at night, so keeping an eye out for them can be a pain. It's usually easier to dig around in the soil if you can without disturbing the new plants. Also, making a ring of diatomaceous earth will create a barrier, but that too needs freshening often. *Bacillus thuringiensis* (Bt) pesticides will work because these are caterpillars, but the trick is getting it on them. Most of the other methods mentioned are more productive than spraying. Thankfully, most species are not too picky and will feed on any young green shoots sparing our garden, and they have yet to be a major pest in Alaska.

Joey can be contacted at:  
jaslowik@alaska.edu.

## **Mat-Su Master Gardener Meeting Minutes: May 3, 2021**

Submitted by Secretary Dorte Mobley

Present: Deb & Ken Blaylock, Ann Eagerton, Sue Glenn, Kristina Tornqvist, Dorte Mobley, Eva Cohen-Brown, Curt and Marge Mueller, Arlene and Wayne Bowman, Hazel Koppenberg, Wendel Lewis, Anita Chace, Greg Kalal, Cathy Crew, Bonnie Hager, Laurel Flynn.

Cathy provided the treasurer's report: We have \$4,143.75 in the checking account and \$7,753.39 in savings. Cathy answered some questions, and the report was approved after a motion by Kristina that was seconded by Ken.

Minutes were in newsletter. There were no corrections and the motion by Ken, seconded by Kristina, was approved.

Huge thanks to the Lazy Mountain Bible Church for letting us use the church for the meeting.

Plantings at the Veterans & Pioneers Home will be June 7 at 2 pm, and at the library will be June 14th at 7 pm. Please bring tools and buckets for weeds. Sue reported that there are planters in some courtyards in the Pioneers Home that they would like to get planted. Some areas have big pots too. We would only be planting and not keeping it up. Sign up passed around. Dorte volunteered to help. A motion by Kristina to use \$200 for plants, seconded by Laurel, suggested that we buy plants for the court yards if we have some people who will plant them. Motion passed.

The different garden clubs will have booths in the same area at the Midsummer Garden & Art Faire so it will be easier for the members who participate in different clubs. We will have flyers, signs, and tablecloths from the Extension office. A suggestion was made that we do a small activity or raffle off a small plant or two.

We will do some "Pop Up" tours this summer: Members who have gardens that look really good at that time, can let Dorte know (907-232-5422), and we will let the other members know what night we go. Other clubs are doing the same and will invite the master gardeners. We are thinking of making the "regular" tour in Eagle River this year.

Deb extended a thanks to Curt and Wayne for the "special edition" newsletter about bridge grafting.

We will put the weeding schedule on the web site.

Plant sale is on June 5th. Ken had labels and a sign-up list for members for the plant sale. Ann is in charge of advertising and she is making flyers for distribution. She was suggesting printing quarter sheets on cardstock. Kristina motioned to print 50 sheets and it was seconded by Ken. All were in favor and no opposed. We will put the sign up on the fence after the Saturday before the sale. Wendel will get the table and chairs. Cathy needs help and we will take cash, checks or cards with the Square. Members need to charge full dollars and no cents. We are asked to have the dollar amount and our initials on both sides of the yellow labels (to make counting at the end easier). The check-out stand will be under the pavilion and there are not to be cars in the sales area. Please start collecting cardboard flats to use.

We still need a nominating committee and more members to help with the 2022 Master Gardener Conference.

Next meeting will be on June 14th at the Palmer Public Library at 7 p.m.

Kristina motioned to adjourn the meeting and Ken seconded it. Motion carried and meeting was adjourned at 7:52.

The meeting was followed by a great IPM presentation by Joey Slowik of the Cooperative Extension Service.

MMGA Booth Shift Sign Up, Palmer Midsummer Garden & Art Faire July 10, 2021	
Time:	Name
9 – 10 am Set-up	Blaylocks (canopy, table, chairs & sign), Sue Glenn
10 am - Noon	Marge Mueller
Noon – 2 pm	Sue Glenn Phyllis Kircher
2 – 4 pm	Ann Eagerton Craig Lisonbee
4 – 6pm	Anita Chace
6 pm Take down	Blaylocks (take down canopy, table & chairs & sign), Sue Glenn



For more info:  
<https://palmergardenandart.org/>

## 2021 Alaska State Fair "Seeing is Believing"

~ Volunteers needed to be part of the largest garden exhibit in Alaska ~

Entry & Judging days at the Alaska State Fair's Crops & Flowers Departments are a fun atmosphere to meet new people & catch up with old friends. It is a great opportunity to learn something new and to share your own gardening experiences. You can even earn some credits for Master Gardener volunteer hours!

~ Entry Clerks ~

**Wednesdays, August 25 & September 1**

**Three shifts available... 12-5 PM, 3-8 PM and 5-9 PM**

Help Exhibitors fill out entry forms correctly, explain the use of the Exhibitor Guide, assist with verbal direction on preparation of submissions for judging, and placement of entries in the display area.

~ Judges Clerks ~

**Thursdays, August 26 & September 2 from 8 AM-Noon**

Record winning results, set up and place ribbons for the final display.

~ Extra Hands Needed ~

**Tuesdays, August 31 from 10AM-2PM & September 7 from 9 AM-1PM**

Looking for a handful or two of volunteers to help with 1<sup>st</sup> Entry take down, 2<sup>nd</sup> Entry set up, ribbon sorting, and final shut down of department for the season.

For more information contact Kathy Liska – Horticulture Supervisor  
 (907) 337-2196 hm / (907) 301-0317 cell or [akliska@aol.com](mailto:akliska@aol.com)

## Sign Up for Weeding Palmer Library & Veterans and Pioneers Home

If you would like to sign up for an unclaimed week, email [matsumastergardeners@gmail.com](mailto:matsumastergardeners@gmail.com) with the date and your name.

Week of:	Name
June 14	Wayne & Arlene Bowman
June 21	Theresa Isaac; Craig Lisonbee
June 28	Laurel Flynn
July 5	Sue Glenn; Cathy Crew
July 12	Kristina Tornqvist; Bonnie Hager
July 19	Curt & Marge Mueller
July 26	Wendel Lewis & Anita Chace
August 2	Ann Eagerton
August 9	Ken & Deb Blaylock
August 16	Mabel Wimmer; Danielle and Maya Simoni-Cooper
August 23	Mabel Wimmer
August 30	

## Garden Links (updated Mar 2021)

### Alaska Botanical Garden

<http://www.alaskabg.org/>

### Alaska Center for Conservation Science

<http://aknhp.uaa.alaska.edu/botany/>

### Arbor Day Foundation

[www.arborday.org](http://www.arborday.org)

### Alaska Division of Agriculture

<http://dnr.alaska.gov/ag/>

### Alaska Garden Clubs

<http://www.alaskagardenclubs.org>

### Alaska Grown

<http://www.buyalaskagrown.com/>

### Alaska Master Gardeners Association, Anchorage

<http://alaskamastergardeners.org/>

### Alaska Master Gardener Blog

<https://alaskamastergardener.community.uaf.edu/>

### Alaska Native Plant Society

<http://www.aknps.org/>

### Alaska Orchid Society

<http://www.akorchid.org/>

### Alaska Peony Growers Association

<http://alaskapeonies.org>

### Alaska Peony Society

<https://www.alaskapeonysociety.com/>

### Alaska Pioneer Fruit Growers Association

<http://www.apfga.org/>

### Alaska Plant Materials Center

<http://plants.alaska.gov/>

### Alaska Rhodiola

<https://www.akroseroot.com/>

### Alaska Rock Garden Society

<http://www.akrockgardensociety.org/>

### Good Earth Garden School

<http://ellenvandevisse.com/>

### Grow Palmer

<http://growpalmer.org/>

### Integrated Pest Management Program

<http://www.uaf.edu/ces/ipm/>

### Junior Master Gardener

<http://www.jmgkids.us/>

### Landscape Plants for Alaska

[www.alaskaplants.org](http://www.alaskaplants.org)

### Mat-Su Borough Rain Garden Program

<http://www.matsugov.us/environment/raingardens>

### Mat-Su Master Gardener Website

[www.matsumastergardeners.com](http://www.matsumastergardeners.com)

### Master Gardener Research Link (Extension)

<http://search.extension.org>

### Master Gardeners of the Tanana Valley

<https://fairbanksmastergardeners.wordpress.com/>

### Matanuska Experiment Farm and Extension Services \*New\*

<https://www.uaf.edu/afes/places/palmer/>

### Palmer Soil & Water Conservation

<http://palmersoilandwater.org/>

### Society of American Foresters, Cook Inlet Chapter \*New\*

<http://www.alaska.forestry.org/alaska/chapters/cook-inlet>

### South-Central Alaska Beekeepers Assoc.

<http://www.sababeekeepers.com/>

### Southeast Alaska Master Gardeners Association

<http://seak-mastergardeners.org/index.html>

### Sustainable Agriculture – UAF

<https://www.uaf.edu/ces/agriculture/sare/>

### UAF Cooperative Extension Service

<https://www.uaf.edu/ces/>

### UAF Cooperative Extension Service Publications

<http://www.uaf.edu/ces/pubs/catalog/>

### UAF CES Citizen Pest Monitoring Portal

<https://pestreporter.alaska.edu/>

### UAF Georgeson Botanical Garden

<http://www.georgesonbotanicalgarden.org/>

### UAF Herbarium

<http://www.uaf.edu/museum/collections/herb/>

### UAF Alaska Master Gardener Program

<https://www.uaf.edu/ces/garden/mastergardeners/>

### UAF School of Natural Resources & Extension

<http://www.uaf.edu/snre/>

### University of Saskatchewan Fruit Program

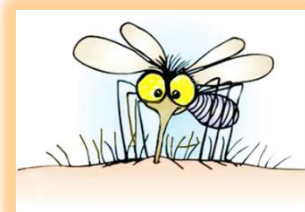
[www.fruit.usask.ca](http://www.fruit.usask.ca)

### USDA/NRCS Plant Data Base

<https://plants.sc.egov.usda.gov/>



*Coming to a garden near you!*



## CLUB CONTACT INFO

<b>President:</b>	<b>Deb Blaylock</b>	<b>746-6045/kdblalock@ak.net</b>
<b>Vice President:</b>	<b>Kristina Tornqvist</b>	<b>795-6393</b>
<b>Secretary:</b>	<b>Dorte Mobley</b>	<b>232-5422</b>
<b>Treasurer:</b>	<b>Cathy Crew</b>	<b>632-4401</b>
<b>Member at Large:</b>	<b>Sue Glenn</b>	<b>671-0252</b>

If you have gardening news, photos, or information you'd like to share in the newsletter, please send to the MMGA email.

Website: [www.matsumastergardeners.com/](http://www.matsumastergardeners.com/)

Email: [matsumastergardeners@gmail.com](mailto:matsumastergardeners@gmail.com)

## CALENDAR OF EVENTS

### JUNE 2021 AND BEYOND

**Jun 5**, Palmer, Annual Plant Sale, 9 am – 3 pm  
**Jun 7**, Palmer, Palmer Veterans and Pioneer Home Planting, 2 pm  
**Jun 14**, Palmer, MMGA meeting, Palmer Library Planting, 7 pm  
**Jul/Aug**, Member-Only Summer Garden Tour(s)  
**Aug 20 – Sep 6**, Palmer, Alaska State Fair  
**Aug 28**, Palmer, Alaska State Fair Parade (tentative)  
**Sep 13**, Palmer, MMGA meeting, TBD  
**Oct 4**, Palmer, MMGA meeting TBD  
**Nov 1**, Palmer, Annual MMGA meeting, TBD  
**Dec 6**, Palmer, Christmas Party

### *Club Membership*

The membership year runs from January to December each year. Annual individual memberships are \$15 and family memberships are \$20. Family memberships are only for family members living in the same household. The deadline to join is January 15, 2021 to be listed in the annual membership directory.

Join or renew online.

*Thank you!*

## How and What to Submit for the Monthly Newsletter

Your submissions are greatly appreciated and make our newsletter what it is - so don't be shy about submitting items for publication.

However, there are a few rules which we all must pay attention to:

Articles, stories, poetry, upcoming events, and pictures (garden-related) are gladly accepted for inclusion in the newsletter. Please submit pictures in JPEG format and other items in Word format with no special formatting other than paragraphs. When submitting pictures, please provide a brief caption or explanation as to who or what is in the picture. I do not have a scanner to copy pictures, so I cannot accept hard copies.

If you are not the author or photographer, please ensure you have permission of the author or photographer to use their material in the newsletter. The newsletter publisher is not responsible for obtaining this for you.

Please do not provide magazine articles or pictures from the internet unless they are public domain items.

**Deadline for submission of articles and info: 20<sup>th</sup> day of each month -- Thank you--**





June 2021



Like us on  
**Facebook**

Website: [www.matsumastergardeners.com/](http://www.matsumastergardeners.com/)  
Email: [matsumastergardeners@gmail.com](mailto:matsumastergardeners@gmail.com)

**MAT-SU MASTER GARDENERS  
ASSOCIATION  
PO BOX 598  
PALMER, AK 99645**

